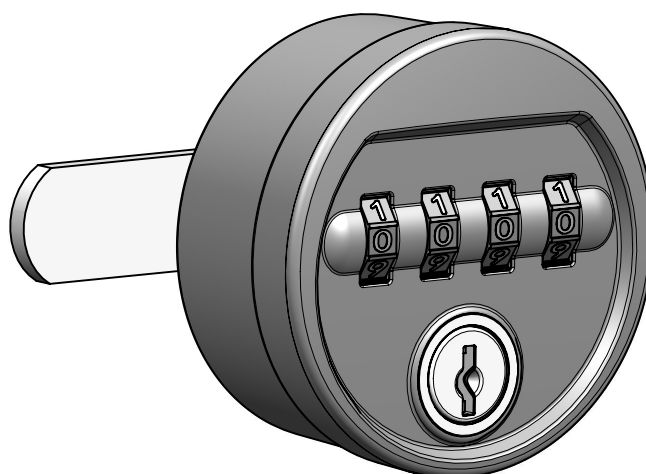


Technical Information

Locking System 1402 "One-Timer"



1.	<u>Product Description</u>	2
1.1	Main Features	2
1.2	General Information	2
2.	<u>Assembly Instructions</u>	3
2.1	Important Hints for Fitters	3
2.2	Assembly Exploded View	3
2.3	Fitting Dimensions and Tightening Torques	4
2.4	Setting direction of rotation.....	5
3.	<u>Operating Instructions for users</u>	6
3.1	Important Hints for Users	6
3.2	Personal code setting and locking	6
3.3	Open the lock	6
4.	<u>Operation Instructions for Administrators</u>	7
4.1	Important Hints for Administrators	7
4.2	QUICK-RESET / Emergency Opening	7
5.	<u>Ordering Information</u>	8
5.1	Important Basic Information	8
5.2	Ordering Matrix Cam	9
5.3	Ordering Matrix Lock / Service Key.....	10

1. Product Description 1402 "One-Timer"

1.1 Main Features

- Combination lock with 10.000 freely programmable user-codes
- Service cylinder with 200 different key numbers for emergency opening and resetting
- QUICK-RESET ¹ for an efficient administration
- ANTI-SPY ² -technology to protect the personal user-codes
- Automatic code-scrambling for even more safety and comfort
- Lock movement R / L settable
- Locking mechanism made of solid zinc die-cast
- Housing made of fibreglass-reinforced and easy to clean special plastic
- Retrofittable for most doors with standard fixing holes 16x19mm
- Lock fixing by nut (SW22)
- Cam fixing by screw (TX25)
- Comprehensive range of cams available with 2 and 3mm thickness
- Ideally suited for 1-point and 3-point cams

¹ Innovative function to restore to factory setting within seconds without time-consuming codefinding

² Innovative lock-system wherewith the readout and misuse of personal user-codes is no longer possible

For more informationen visit: wf-locks.com

1.2 General Information

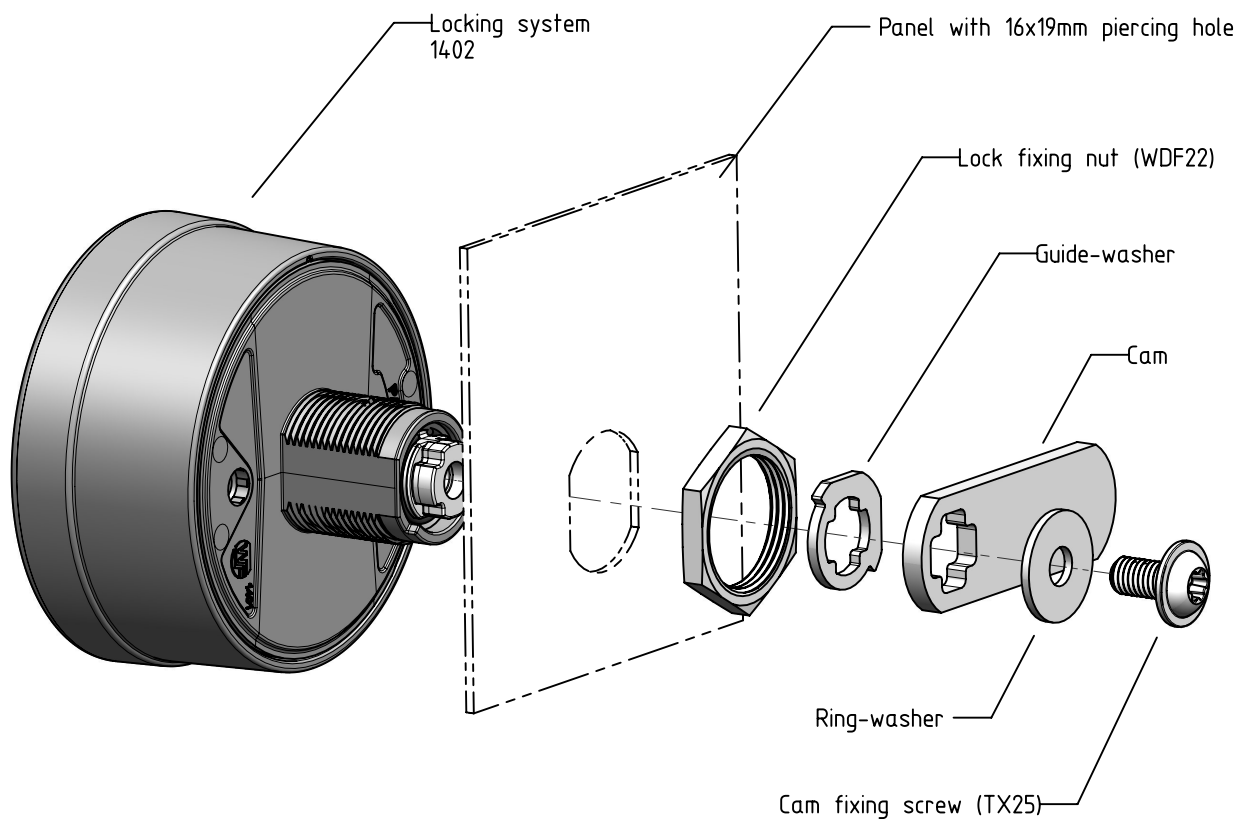
- Please read carefully these instructions before fitting and first use
 - Do not expose lock to enviromental influences like water, moist, dust etc.
 - Lock operable within a temperature range from 0- 50°C (32°F to 120°F)
 - For cleaning use damp cloth and common houshold detergent
 - Don't use aggressive or chemical products
 - When cleaning avoid that water or detergend enters the lock
-

2. Assembly Instructions 1402 "One-Timer"

2.1 Important Hints for Fitters

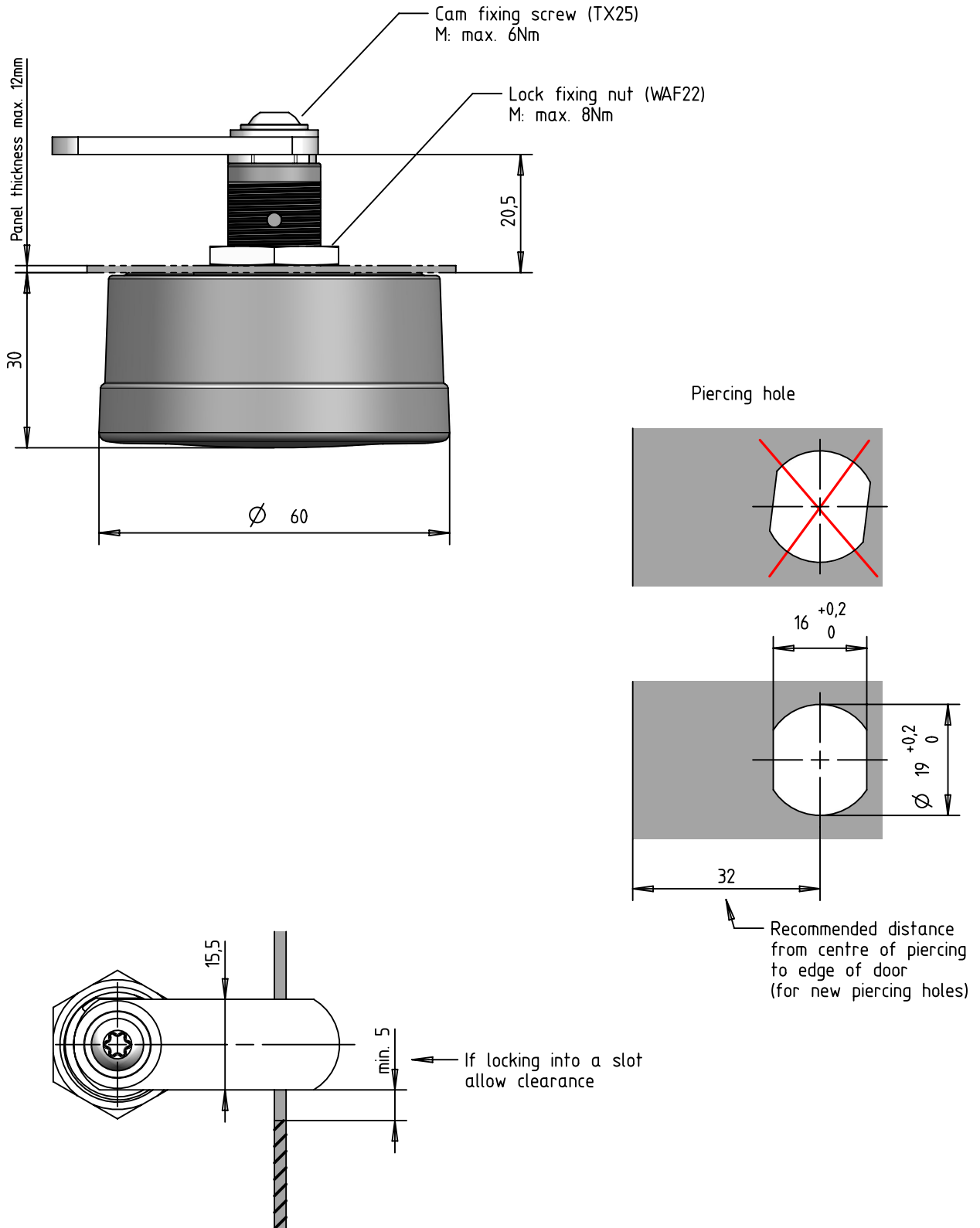
- Use only the supplied original fixing elements
- The cam fixing screw is thread-forming and self-retaining
- Use only suitable and properly functioning tools
- Do not break the torque limits
- Lock movement must be set by the guide-washer before fixing the cam (see 2.4)
- The lock movement is 90°
- The 16x19 piercing hole must be vertical
- In locked position the code-wheels are horizontal aligned
- Adhere the required tolerances of the piercing hole

2.2 Assembly Exploded-View



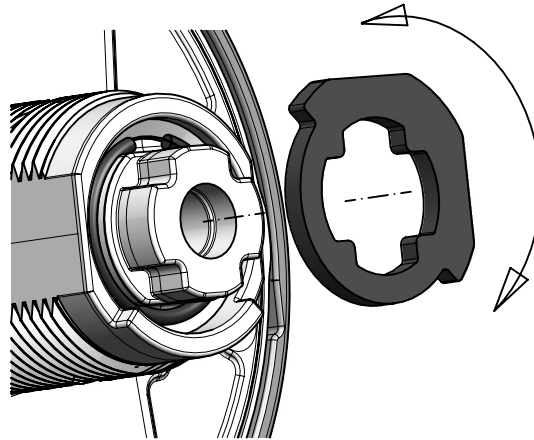
2. Assembly Instructions 1402 "One-Timer"

2.3 Fitting Dimensions and Tightening Torques

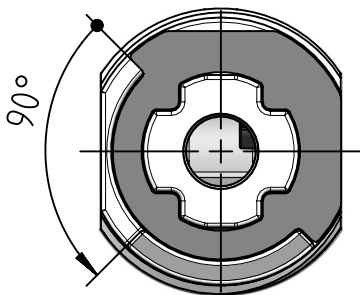


2. Assembly Instructions 1402 "One-Timer"

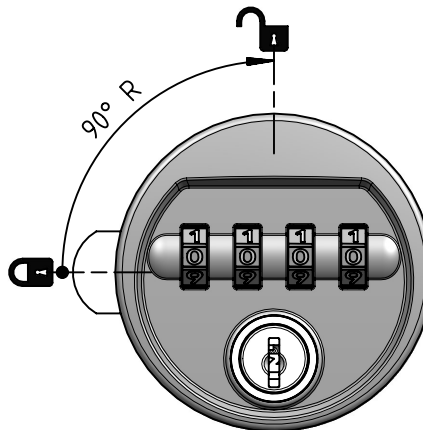
2.4 Setting direction of rotation



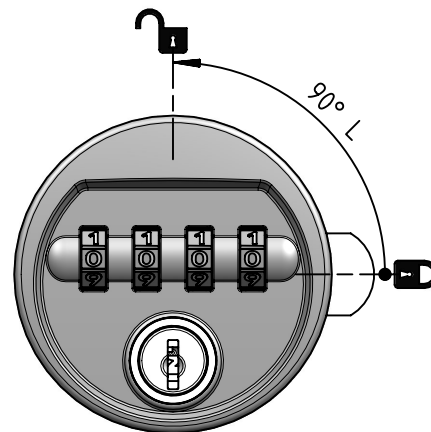
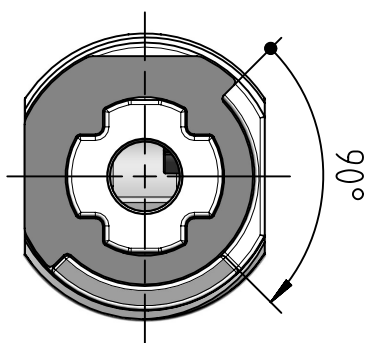
Orientation guide washer
in locked-position



Direction of rotation to unlock



"R" for right-hinged doors



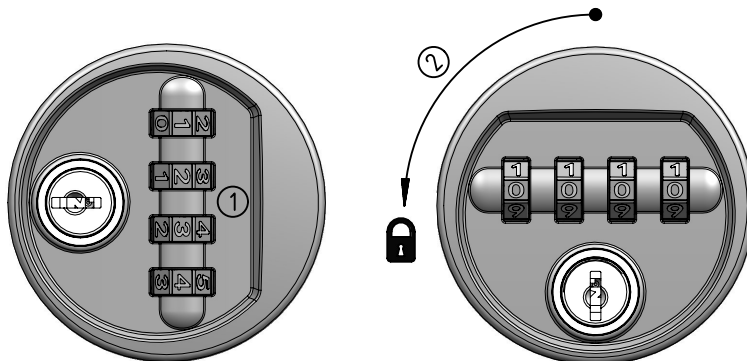
"L" for left-hinged doors

3. Operation Instructions for Users 1402 "One-Timer"

3.1 Important hints for users

- In opened position with vertically aligned numbers the lock is in coding mode
- In vertical position displayed or selected code is automatically stored and scrambled when closing.
- Before closing, remember the code fixed by you or note it down if needed
- Do not select 0-0-0-0 as personal code
- With every opening your personal code is automatically deleted
- In case of lost code contact the administrator
- Leave you locker with opened lock in vertical position

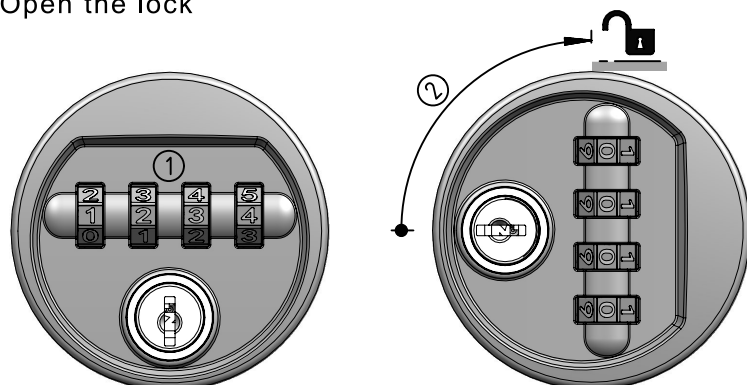
3.2 Personal code setting and locking



1. In vertical position
set personal code

2. Turn lock to the horizontal position
until it clicks into place
(Code is stored and scrambled)

3.3 Open the lock



1. Enter personal Code

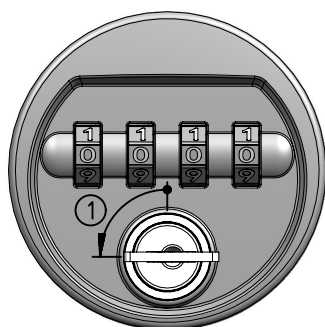
2. Turn lock to the vertical position
(Code is deleted)

4. Operation Instructions for Administrators 1402 "One-Timer"

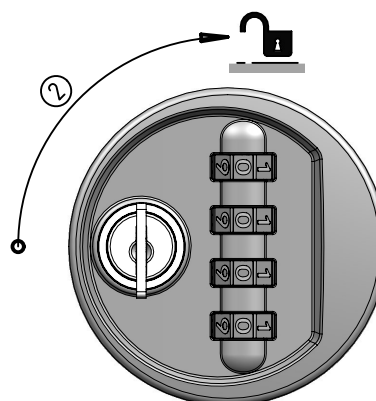
4.1 Important hints for Administrators

- With service key you can always open the lock
- With every opening the code is deleted
- Service key can only be removed in closed position
- Service key is provided with key numbers
- For security reasons please keep the number of service keys at a minimum and keep it in a safe place

4.2 QUICK-RESET



1. Insert service key into barrel and turn it 90° to the left



2. Open the lock

5. Ordering Information 1402 "One-Timer"

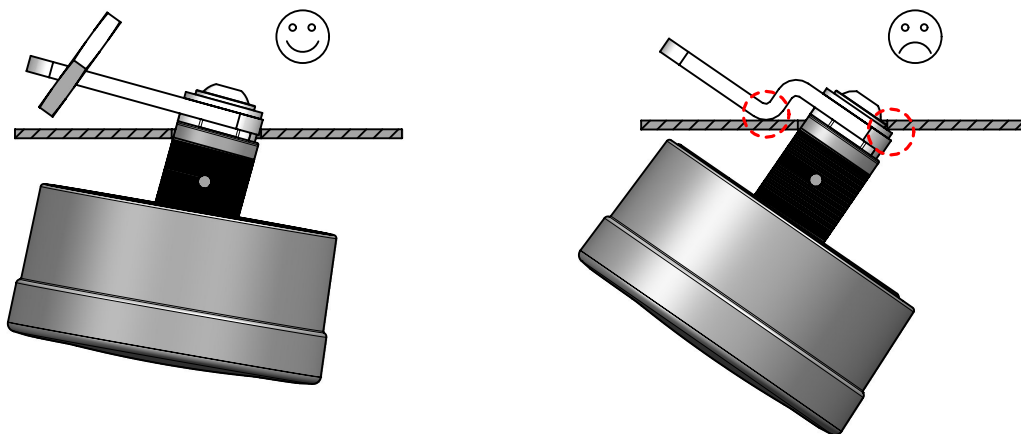
5.1 Important Basic Information

Lock, cam and service key will be ordered separately. A complete order or inquiry comprises 3 order numbers:

1. Order no. cam	(Bestellmatrix 5.2)	Beispiel: C1402-3-4-20-30-DO
2. Order no. lock	(Bestellmatrix 5.3)	Beispiel: L1402-G-051-R-09-H
3. Order no. service key	(Bestellmatrix 5.3)	Beispiel: S1402-051

Cam and fixing elements are standardly delivered unmounted. On request the cam can be premounted as well. The needed specification for that will be done according to order matrix 5.2.

Important: If you want the cam premounted please make sure that the lock with fixed cam still fits through the 16x19 piercing hole. That mainly depends on the cam shape and the panel thickness.



The factory-set code is 0-0-0-0.

For security reasons please keep the number of service keys at a minimum.

Service keys and locks are provided with key numbers. For security reasons the key number of the lock is on the back.

Each order quantity will be delivered keyed to pass. This means that all locks have the same key number (differ number), with one key opening all.

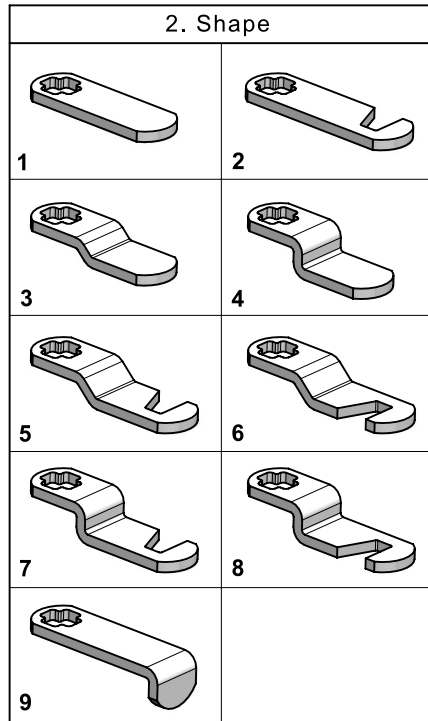
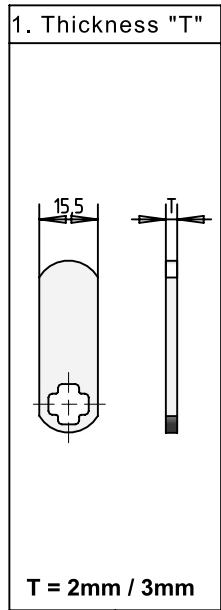
If you need different key numbers e.g. in order to equip different rooms or permissions please split the order quantity in different key numbers.

For the service cylinder please chose one of the standard key numbers according the order matrix 5.3. On request there are additional 200 key numbers available.

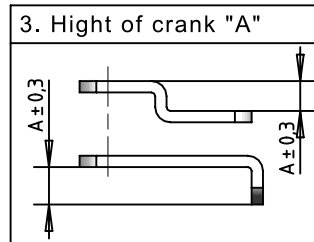
For short delivery times please prefer the given standards from the order matrices. But special designs such as differnt colours or something else can also be requested at any time.

5. Ordering Information 1402 "One-Timer"

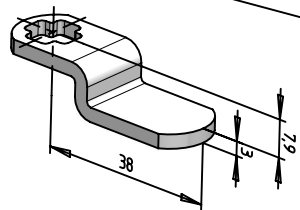
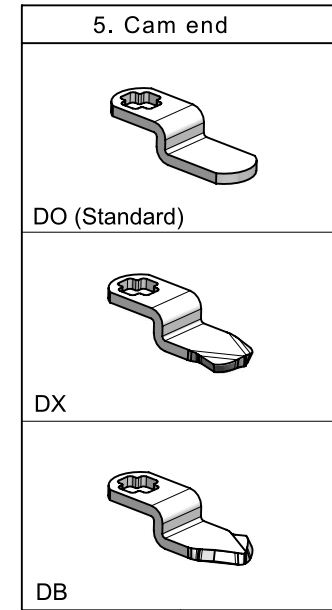
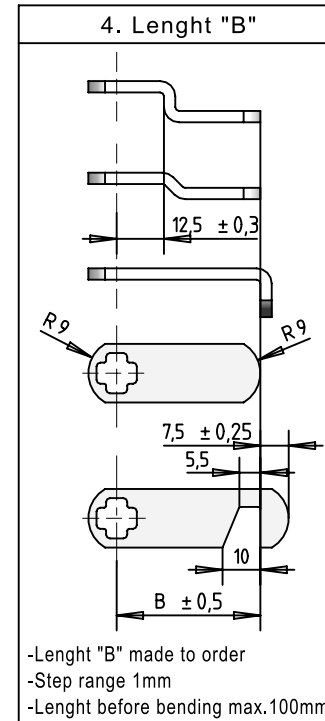
5.2 Ordering Matrix Cam



3. Hight of crank "A"

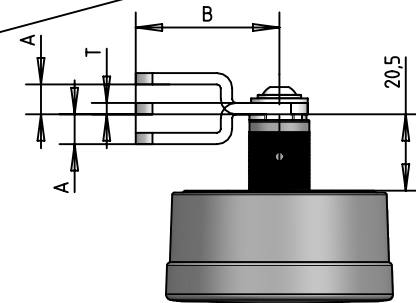


A	mm	für Form
00	0	-1-2-
03	1,2	-3-5-6-
04	1,6	-3-5-6-
05	2,0	-3-5-6-
06	2,4	-3-5-6-
07	2,8	-3-5-6-
08	3,2	-3-5-6-
10	4,0	-3-5-6-
12	4,8	-3-4-5-6-7-8-
14	5,6	-3-4-5-6-7-8-
16	6,4	-4-7-8-9-
20	7,9	-4-7-8-9-
21	8,3	-3-5-6-
25	9,9	-3-4-5-6-7-8-9-
28	11,1	-4-7-8-9-
32	12,7	-3-4-5-6-7-8-9-
34	13,5	-4-7-8-9-
38	15,0	-4-7-8-9-
40	15,9	-4-7-8-9-
44	17,5	-4-7-8-9-
48	19,1	-4-7-8-9-
50	19,9	-4-7-8-9-
64	25,4	-4-7-8-9-
72	28,6	-4-7-8-9-



Order example cam:

C1402-3-4-20-38-DO



5. Ordering Information 1402 "One-Timer"

5.3 Ordering Matrix Lock / Service Key

